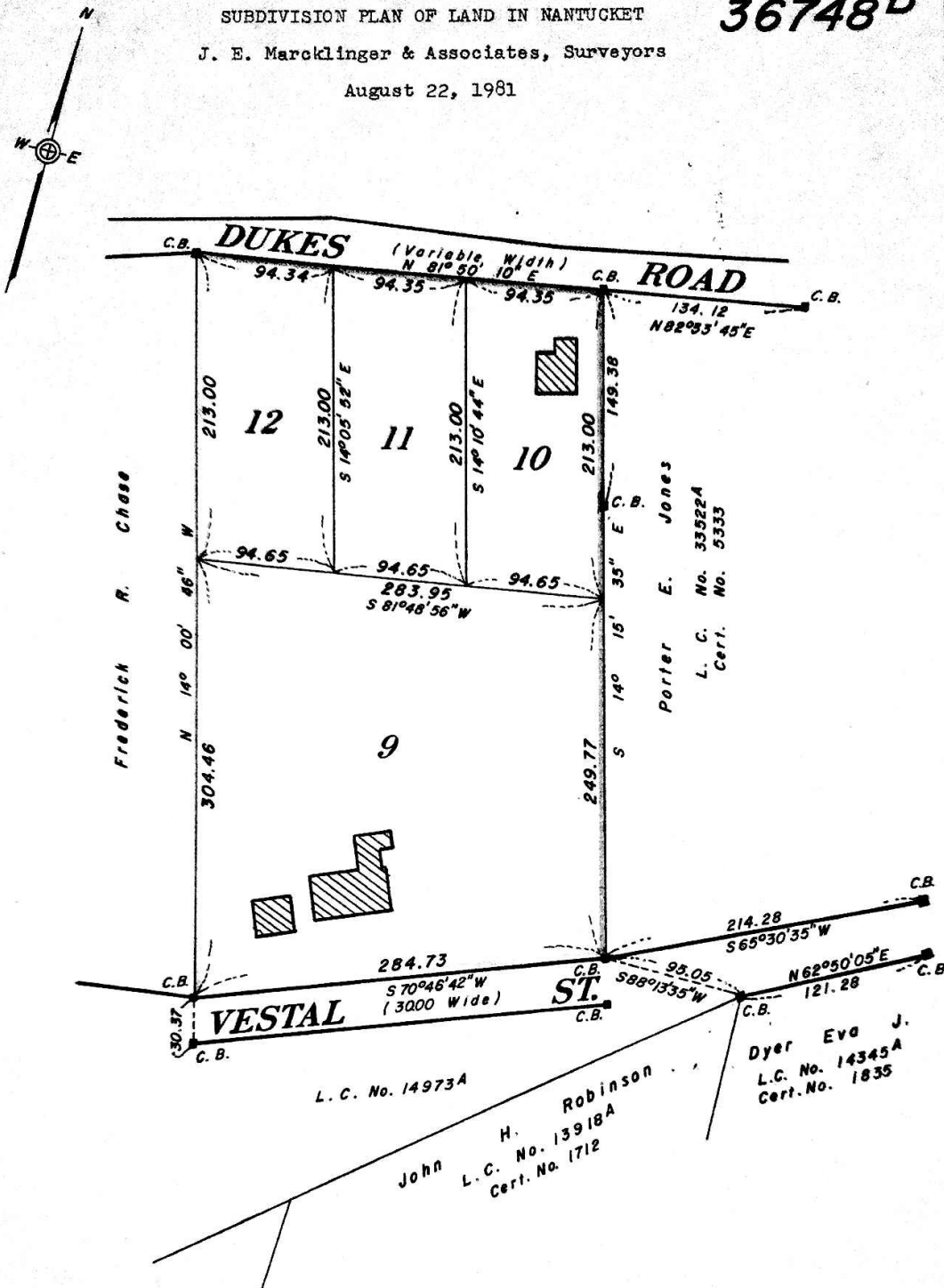


SUBDIVISION PLAN OF LAND IN NANTUCKET

36748^B

J. E. Marcklinger & Associates, Surveyors

August 22, 1981



This plan filed with Certificate No. 9997

Subdivision of Lots 1 thru 8
 Shown on Plan 36748^A
 Filed with Cert. of Title No. 7339
 Registry District of Nantucket County

Separate certificates of title may be issued for land
 shown hereon as Lots 9 thru 12
 By the Court.

SEP 25 1981
 P.T.P.
James M. Robison
 Deputy Recorder

Abutters are shown as
 on original decree plan.

Copy of part of plan
 filed in
LAND REGISTRATION OFFICE
 SEPT. 14, 1981
 Scale of this plan 80 feet to an inch
 R.C. Collette, Deputy Engineer for Court